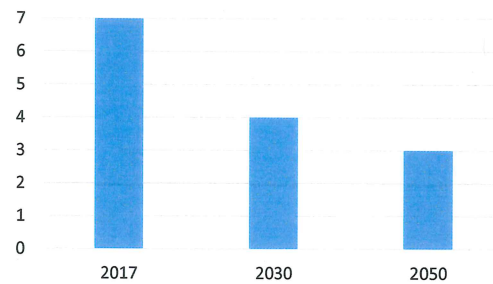


## Fewer Caregivers To Support Seniors

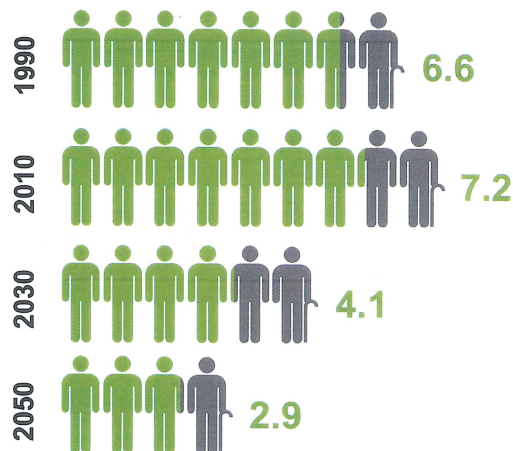
Ratio of Caregivers (45-64 year olds) To Those Over 80 Will Shrink From 7:1 Today to 4:1 in 2030

- Declining Fertility Rates Among Baby Boomer Women
- Baby Boomers Shift from Being the Caregivers to being the Receivers of Care



Copyright © 2018 National Investment Center for Seniors Housing & Care

6

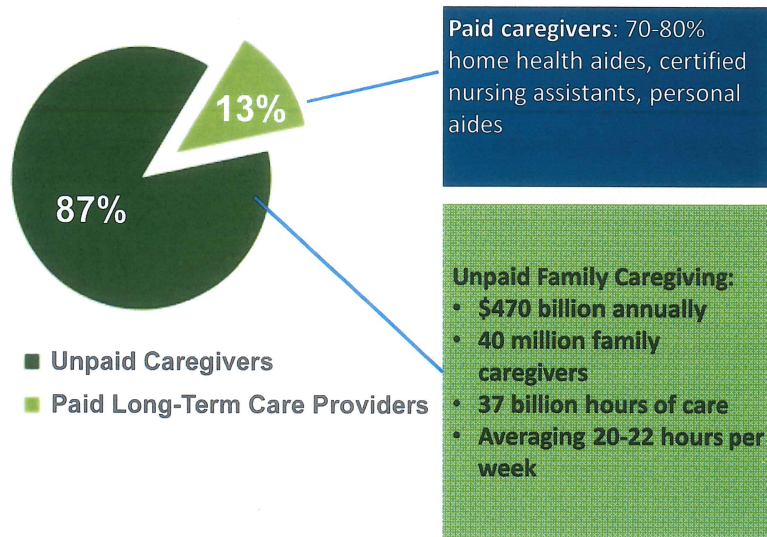


1/2  
as many  
caregivers  
will be  
available in  
2050

### Ratio of Potential Caregivers to Those Needing Care<sup>1</sup>

AARP PPI "The aging of the baby boom and the growing care gap: A look at future declines in the availability of family caregivers"

1. Ratio of # people in most common caregiving age (45-64) to those at most risk for needing care (80+)



Source: SCAN Foundation, Who Provides Long-Term Care in the US? October 2012; Feinberg, et al, "Valuing the Invaluable, 2015 Update; 2015 Alzheimer's Facts and Figures, Alzheimer's Association